



**POWER  
EQUIPMENT**

# Robust Solutions For A Safe, Reliable Grid

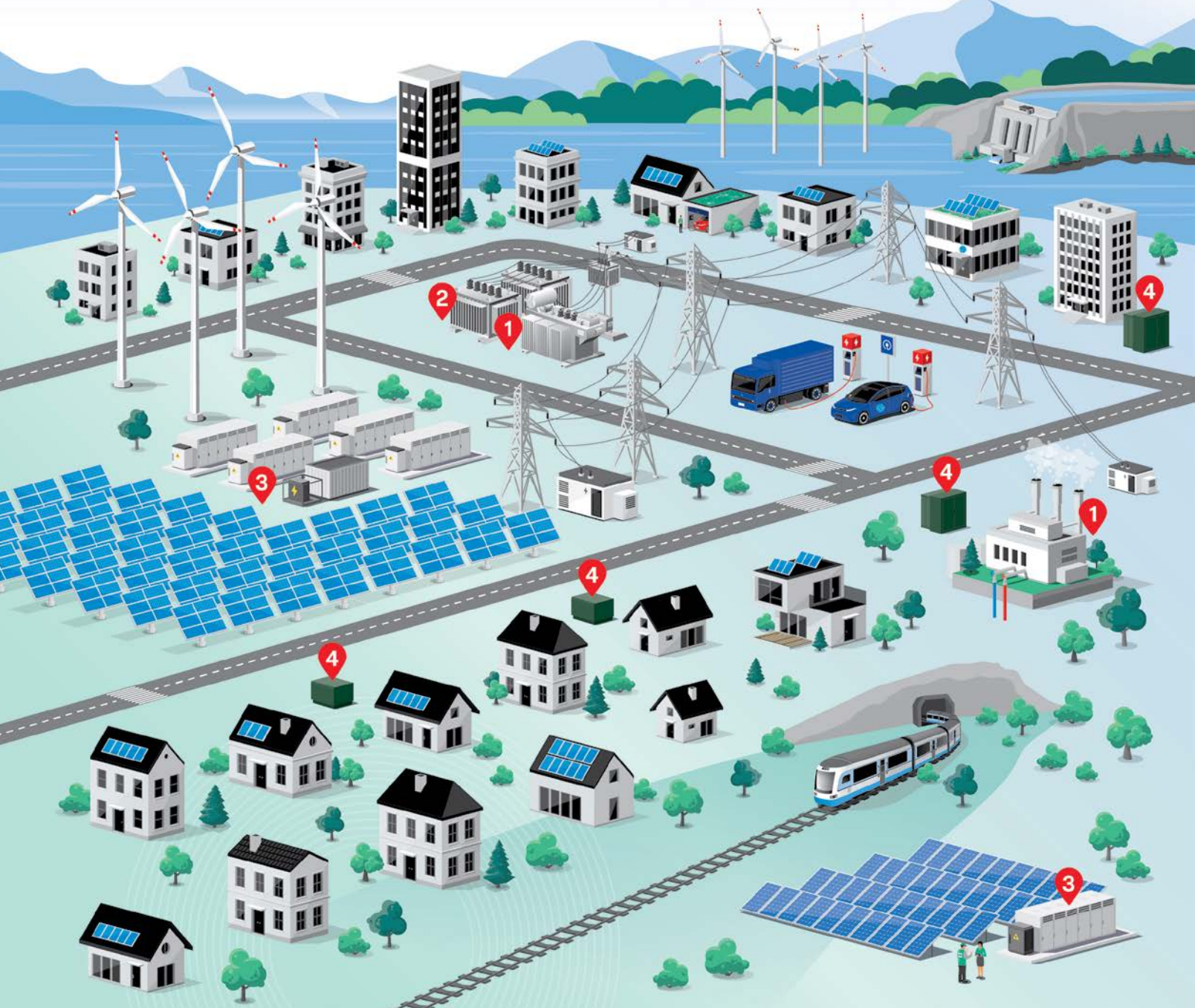
Transformer, Switchgear and Electrical Power Solutions



**30+**

Years of  
Production  
and Operating  
Excellence

# JST Electrical Solutions That Power Utilities



- 1 Dry-Type Transformers & MV Switchgear
- 2 Outdoor Substation Breaker

- 3 Battery Energy Storage Systems (BESS)
- 4 Pad Mounted Transformers



# Transformers

Dry-type and oil-filled transformers each offer unique features and advantages. Depending on the requirements profile in your application case, we will find the right solution to fit your needs.

## Dry-Type Transformers

Environmentally friendly alternatives to oil-filled transformers with higher performance and better electrical properties:

- Cast resin voltage levels up to 72.5 kV (350 kV BIL)
- VPI voltage levels up to 25 kV (110 kV BIL)
- Easy maintenance and servicing
- Cooling operation at higher outputs through fans and cooling ducts
- Robust structure to prevent damage from electrical faults
- NEMA enclosure options



## Pad Mounted Transformers

Our single-phase and three-phase liquid-filled pad mounted transformers serve a variety of industry applications. These solutions offer the following advantages:

- Single-phase voltage levels up to 34.5 kV
- Single-phase power ratings up to 167 kVA
- Three-phase voltage levels up to 44 kV
- Three-phase power ratings up to 10,000 kVA
- Space-saving, compact design
- High-quality production materials and solid workmanship
- Easy to install with low maintenance

## Power Transformers

Fully customizable, robust construction with maximum durability and low maintenance for optimum power distribution for low to medium voltage power levels:

- Power ratings 5–100 MVA\*
- Primary voltage ratings up to 171 kV
- Capacity to operate under harsh industrial conditions
- Optimized performance and reduced operational costs
- Compact size allows for easy integration

\* Ask us about sizes and ratings beyond 100 MVA to meet your project specifications.





# Medium Voltage Switchgear

JST Power Equipment's switchgear products offer you the most flexible options to suit your power distribution needs. Our solutions are engineered for quality and built to last.

## Air-Insulated Switchgear

Our J100CLAD™ Metal-Clad Air-Insulated Switchgear is an IEEE rated, non-arc resistant, metal-clad medium voltage air-insulated switchgear that provides safe, reliable switching and fault protection. It is specially designed for our J3MAG™ vacuum circuit breaker that offers several advanced features and advantages, including:

- 5–15 kV / 3000 A / 25–50 kA
- 3-cycle operation
- Independent pole actuators
- Highly reliable magnetic actuators
- Safer design, easier access for service



## Gas-Insulated Switchgear

We offer robust and compact gas-insulated switchgear products in various system configurations and insulator types, including an environmentally friendly, non-SF6 option. They are engineered for use in a variety of applications and include:

- J10X™ RMU (SF<sub>6</sub>): 38 kV / 600 A / 25 kA
- J20X™ CGIS (SF<sub>6</sub>): 38 kV / 3000 A / 40 kA
- J20X™ CGIS (SF<sub>6</sub>): 69 kV / 1200 A / 31.5 kA
- J10N™ Dry Air GIS: 5 kV / 600 A / 20 kA
- J20N™ Dry Air GIS: 38 kV / 1200 A / 31.5 kA

## Outdoor Substation Breaker

Our OD3MAG Outdoor Substation Breaker is the first medium voltage substation breaker that allows the choice of single-phase or three-phase operation. Combined with a robust enclosure that prevents moisture and contamination ingress, the OD3MAG breaker uses field-proven magnetic actuation to significantly reduce O&M spend.

- 15.5 kV / 2000 A / 31.5 kAIC / 125 kV BIL
- Single-phase capability with independent pole actuators
- Direct drive, magnetic actuation eliminates the need for lubrication and allows consistent operating speed across the life of the breaker





# Battery Energy Storage Systems

Our battery energy storage systems (BESS) solutions are engineered and custom-built to meet the needs of our customers across global markets and various industry applications.

## HV Transformerless Products

Our high voltage, stage-fed energy system enables 38 kV direct grid connection without the use of a transformer—reducing system losses and improving cycle efficiency.

- Capacities range from 1 MWh to over 1000 MWh
- Reliable peak power supply
- Energy cost optimization
- Maximum renewable energy utilization



## All-in-One BESS Solution

For commercial and industrial applications, our all-in-one solution offers:

- 100 kW / 233 kWh and 100 kW / 215 kWh options
- Optimal peak management
- Enhanced backup power and resilience
- Increased power quality and reliability



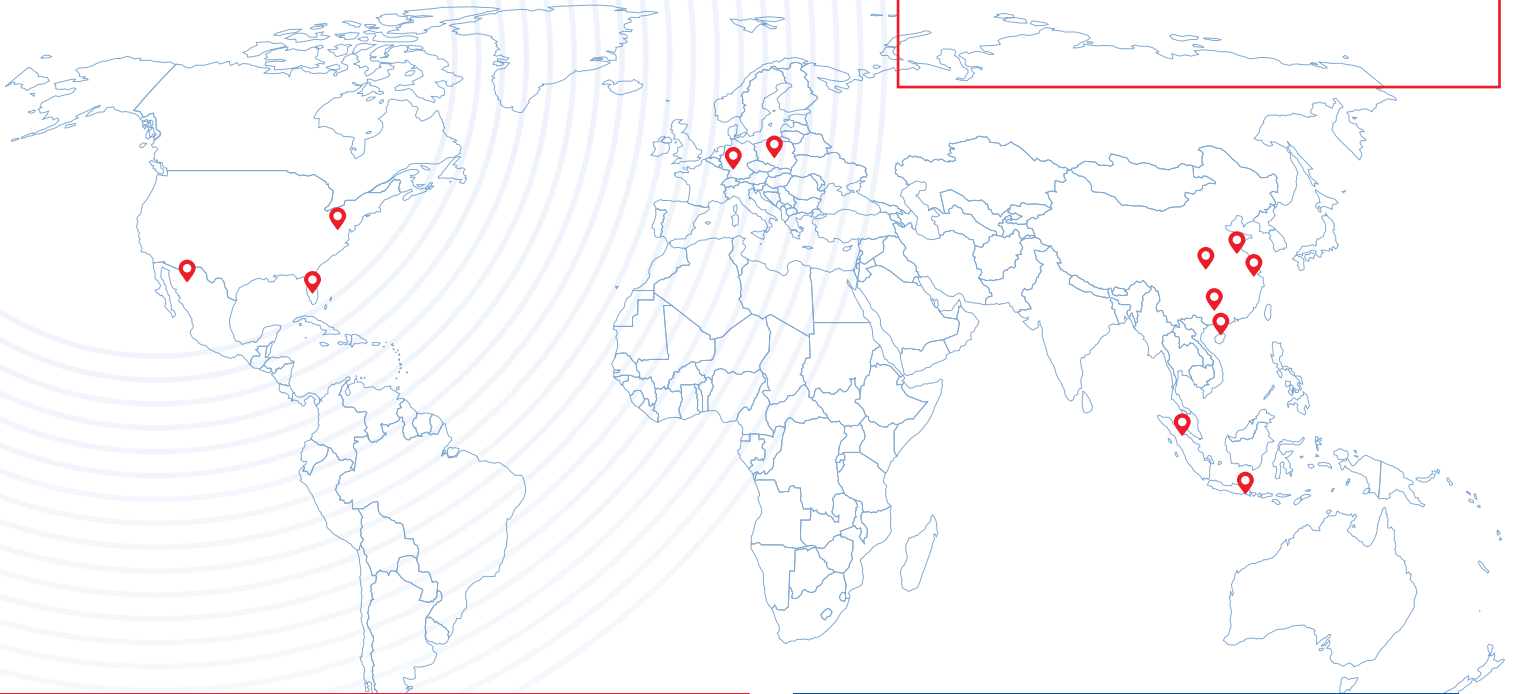
## A Standard of Excellence

### Our Customer Commitment

- Outstanding customer service when and where you need it
- Dedicated planning and engineering
- Industry-leading delivery times
- Exceptional customer-awarded product quality standard
- End-to-end project management and after-sales service

# JST Power Equipment Around the World

Want to know more  
or inquire with our  
team? Scan here.



## About Us

At JST Power Equipment, we pride ourselves on delivering world-class transformer and electrical equipment solutions. The key to our success is the ability to provide quality products with speed and precision through the dedication of our talented team.

For over 30 years, we've evolved to become an innovator in the electrical industry and we work hard to design and build our products to the highest quality standards. And as we look toward the future, we're continuously investing in our technology, facilities and people to engineer the best solutions in the industry and create more value for our customers.

At JST we're more than a manufacturer, we're transforming the future of power.

## Where you can find us

### North America

- Orlando, FL USA
- Wytheville, VA USA
- Nogales, Mexico

### Europe

- Frankfurt, Germany
- Lubliniec, Poland

### Asia

- Guilin, China
- Haikou, China
- Shanghai, China
- Wuhan, China
- Yangzhou, China
- Surabaya, Indonesia
- Klang, Malaysia



### JST Power Equipment, Inc.

30 Skyline Drive  
Lake Mary, Florida 32746  
Phone: 407-632-4050  
Fax: 407-982-1153

Sales@jstpower.com  
**JSTPower.com**

© 2025 JST Power Equipment. All rights reserved.  
MAR-0000039 Rev 1.0 / JST